



ホテル大雪

ONSEN & CANYON RESORT

こころ、
解き放つ。



こ こ は 、 北 の 山 岳 リ ゾ ー ト 。

Sounkyo, Hokkaido.

Sheer cliffs across the Ishikari River.

Place where the autumn arrives the earliest in all Japan.

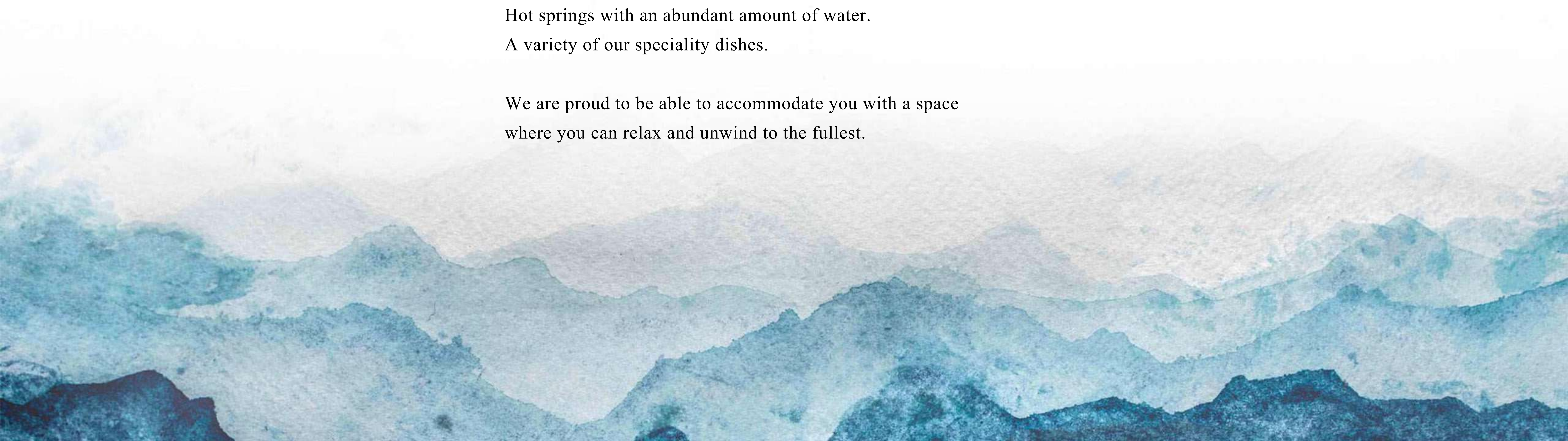
And an exceptional four seasons of Hokkaido.

Once you breathe in the crisp, clear air, the extraordinary begins.

Hot springs with an abundant amount of water.

A variety of our speciality dishes.

We are proud to be able to accommodate you with a space
where you can relax and unwind to the fullest.



A place to meet stunning four seasons like no other kind



Spring

Being surrounded by the Mt. Taisetsu range, spring arrives slowly at Sounkyo. But once it arrives, flowers bloom rapidly as if to get the most out of short spring.



Summer

The summit of Mt. Kurodake floating in a sea of clouds creates such a mystical scenery, while all living creatures turn vibrant on the ground surface.



Autumn

Sounkyo is the starting place for autumn in all Japan. Once the leaves begin to turn colors, it changes its appearance so rapidly. It is such an ephemeral but dynamic few weeks.

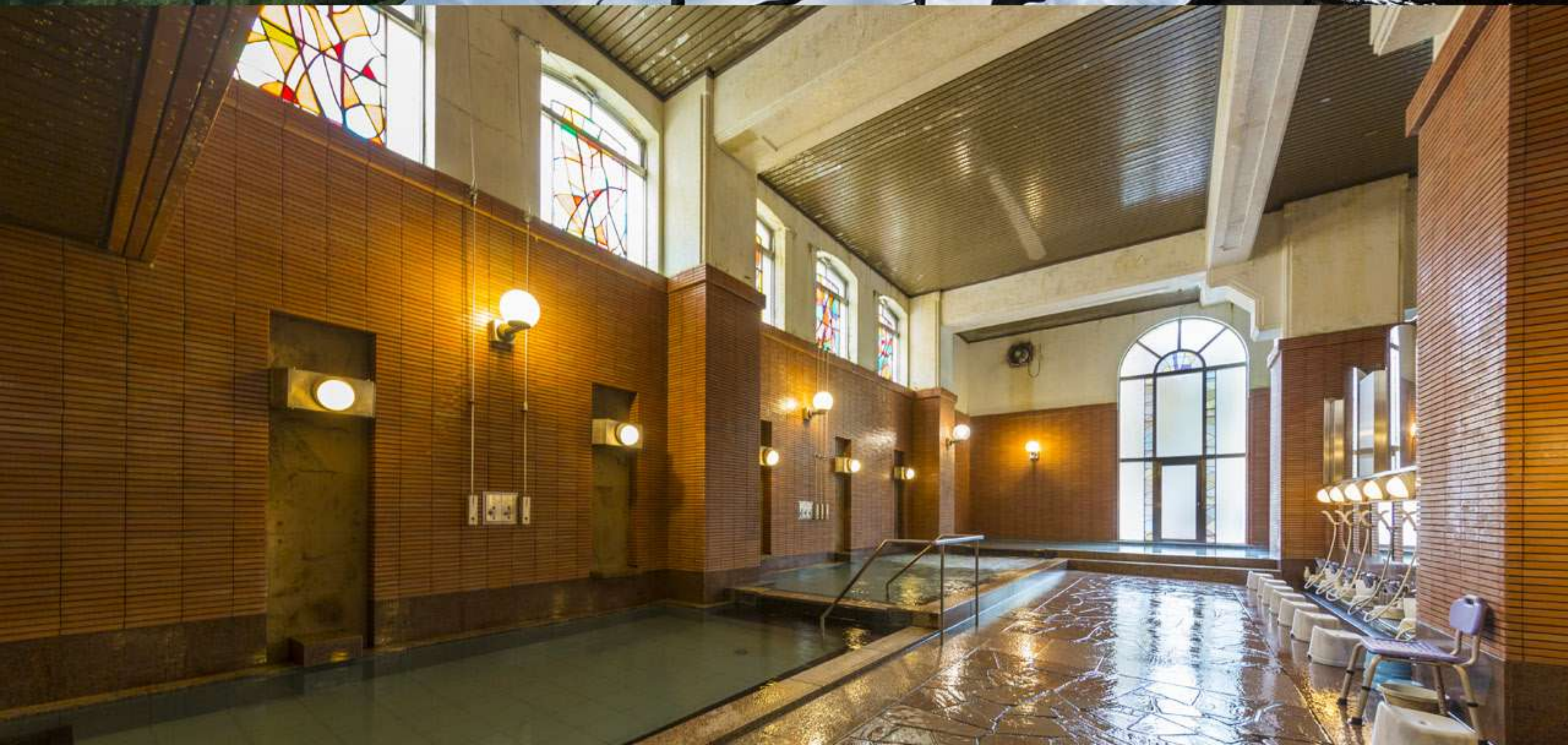


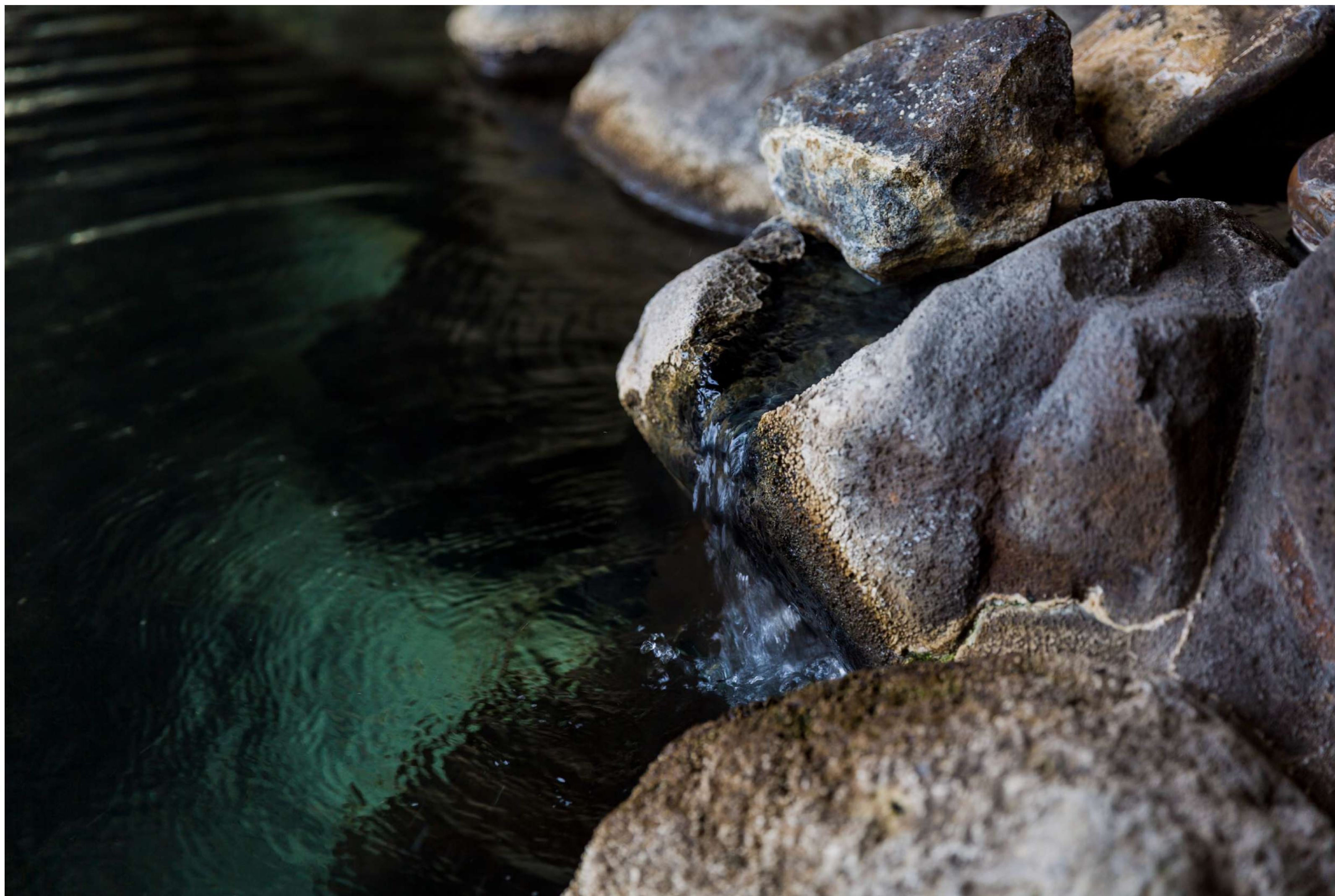
Winter

The harsh and long winters have fostered various cultures. Sounkyo is beautiful because it is winter.

Unwind yourself in one of Hokkaido's greatest hot springs

Choose from any of our uniquely-featured three indoor baths and two open-air baths,
and enjoy a luxurious time to your heart's content while gazing at the magnificent Sounkyo gorge.





Hotel Taisetsu offers three different hot springs, each with its own unique features.

Enjoy our hot springs that take advantage of its location being on the highest ground in Sounkyo Onsen area.

The hot spring water is of course directly drawn from the source.

All you need to do is just select the one that suits your mood at the time, whether that be feeling the excitement of the magnificent view of the Mt. Taisetsu range at **Taisetsu no Yu**, listening to the murmuring of a stream in a canyon through the morning mist at **Tenga no Yu**, or enjoying the exotic atmosphere at **Chinita no Yu**.

We are sure you will be pleased with any of them.



3F, Taisetsusanso annex



1F, East wing



7F, West wing

Tenga no Yu Open-air bath with valley view

The beauty of the valley shrouded in morning mist and the refreshing feeling of as if being one with the majestic nature of Soukkyo are must-experience while your stay. It is located in the annex building, where you can enjoy a different atmosphere.

Bathing time: 5am-12:30pm / 3pm-12am

Chinita no Yu European style indoor bath

The brick style and stained glass interior give it an exotic feel. Because the water is at its highest temperature, you can fully enjoy the true pleasure of a hot spring - working up a good sweat thoroughly.

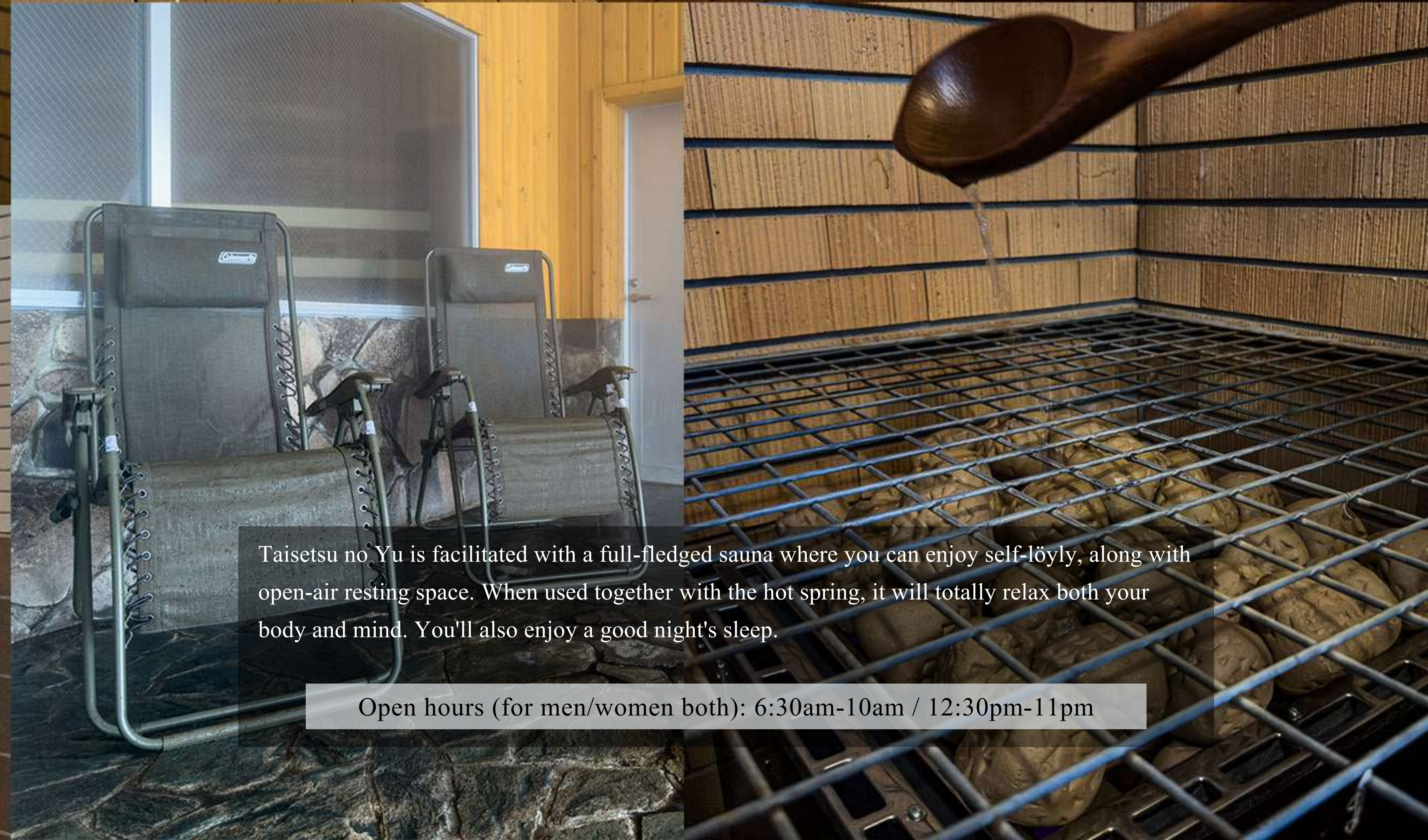
*Chinita means dream and/or hope in the Ainu language.

Bathing time: 10am-8am the next day

Taisetsu no Yu Grand view bath

Our hotel resides on the highest ground in Soukkyo Onsen, making this top-floor bath the highest point in the area. Once you step outside to the open-air bath, you will enjoy the grandeur of the Mt. Taisetsu along with a taste of either one of the four beautiful seasons. There is also sauna.

Bathing time: 12:30pm-10am the next day



Taisetsu no Yu is facilitated with a full-fledged sauna where you can enjoy self-löyly, along with open-air resting space. When used together with the hot spring, it will totally relax both your body and mind. You'll also enjoy a good night's sleep.

Open hours (for men/women both): 6:30am-10am / 12:30pm-11pm

Fascinating culinary experience with fine Hokkaido ingredients

These dishes are all made not only to nourish your body but to enrich your soul.
Being prepared using carefully selected ingredients by the head chef, all the dishes emphasize the best flavor in the seasonal ingredients. The chefs spare no effort or skill to achieve this.
We look forward to welcoming you at any of our three fine restaurants.



Hinna no Mori

Buffet-style restaurant

2F, West wing

Hinna, in the Ainu language, means to thank for food. At Hinna no Mori buffet, we use plenty of Hokkaido ingredients and always have over 100 different food items. Amuse yourself with freshly prepared dishes in the live kitchen or try making your on. Enjoy as much of your favorite food as you like to your heart's content.



RESTAURANT



Inankur Innovative cuisine

1F, West wing

Inankur means happiness in the Ainu language. It is a cuisine with a completely new concept. They select the most delicious ingredients of the season and serve them in courses with a story-telling manner. You can choose from two courses, Unsui and Yamahana, which names evoke the four seasons and the great environment of Sounkyo.

Also, the restaurant offers semi-private rooms where you can relax as if you were in nature.

季饗庵



Kikyō An

Japanese kaiseki cuisine
with private rooms

2F, West wing

This kaiseki restaurant is exclusively available to guests staying in the premium room, Yukihana.

It comprises of all private rooms where you can relax and unwind, and spend quality time with your significant ones.

The ingredients from Hokkaido, carefully selected by our hotel's head chef, are a feast for the eyes as they are prepared with elegant skill.

Enjoy a seasonal cuisine to your heart's content.



Indulge the seasonal beauty of the gorge

Freshly green spring; vibrant summer; colorful autumn; silent winter - all are the views you can enjoy depending on the season. Choose from a variety of rooms to suit your needs and preferences, for example, from Japanese style rooms to Japanese-Western hybrid rooms with canyon view, spacious rooms for families, and premium rooms perfect for special occasions.



Wabo Yukihana Premium room

This special floor features intricate Japanese furnishings, such as tatami hallways that exude a tranquil elegance. We have assembled the ultimate in luxury, including an open-air style bath in each room with water drawn from the hot spring, and a private dining area. It is the perfect space to escape from daily hustle, and spend precious time with your loved ones while outlooking the majestic Sounkyo gorge.



Check-in: 3pm



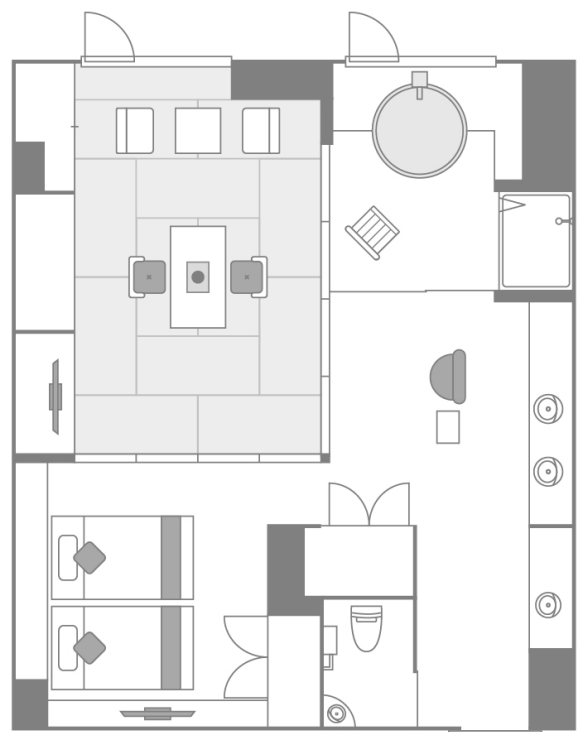
Check-out: 11am



Non-smoking

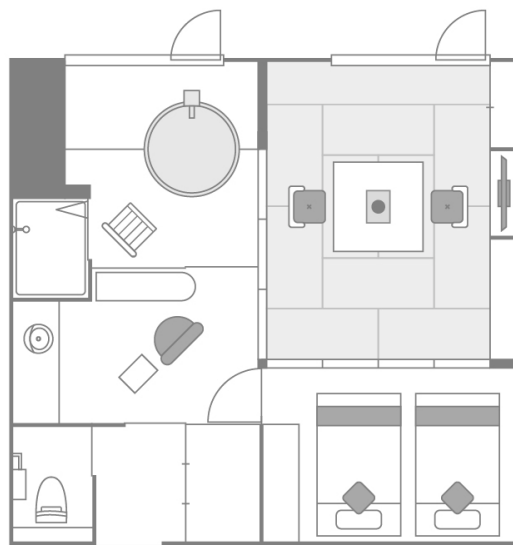


Free WiFi



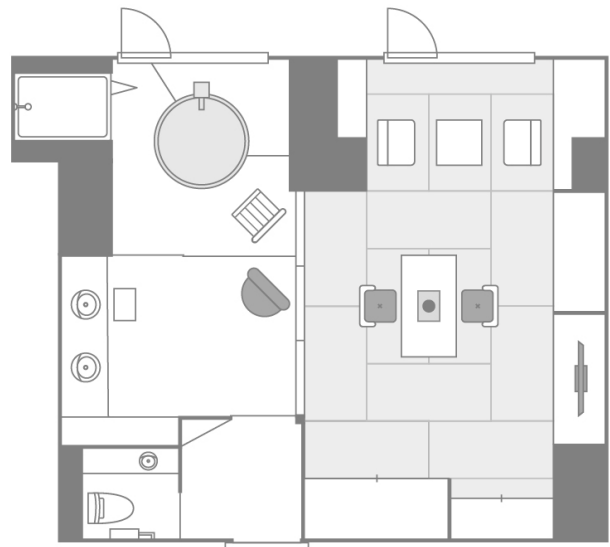
Yukihana TYPE-A

Size: 70 m² / Capacity: 2-5 guests



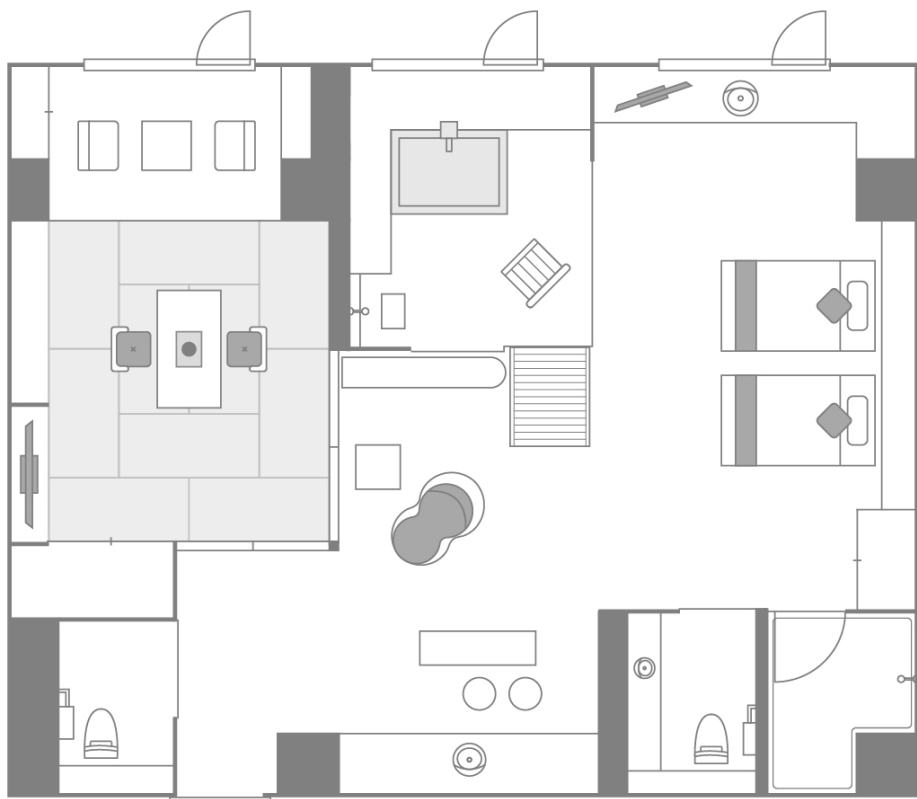
Yukihana TYPE-B

Size: 51 m² / Capacity: 2-4 guests



Yukihana TYPE-C

Size: 51 m² / Capacity: 2-3 guests



Yukihana TYPE-D

Size: 110 m² / Capacity: 2-6 guests

Facilities : CD player / Healing music CD / Coffee maker / Morning newspaper / Thermal water jar (for hot / cold) / Air cleaner / Massage chair / Refrigerator / Mineral water (1 bottler / person) / Green tea

Amenities : Bathrobes / Yukata / Pajamas / Slippers / Tabi socks / Hairbrushes / Toothbrush sets / Cotton swabs / Towels

Men's set : Face lotion / Shaving gel / Razor / Cotton swabs / Hairbrushes / Face wash / Face care lotion / Scalp lotion / Hair liquid


Women's set : Foaming net / Shower cap / Organic cotton swabs / Moisturizer / Hairbrushes / Hair scrunchy / Toner / Milky lotion / Makeup remover



Yuki Hotaru Special room

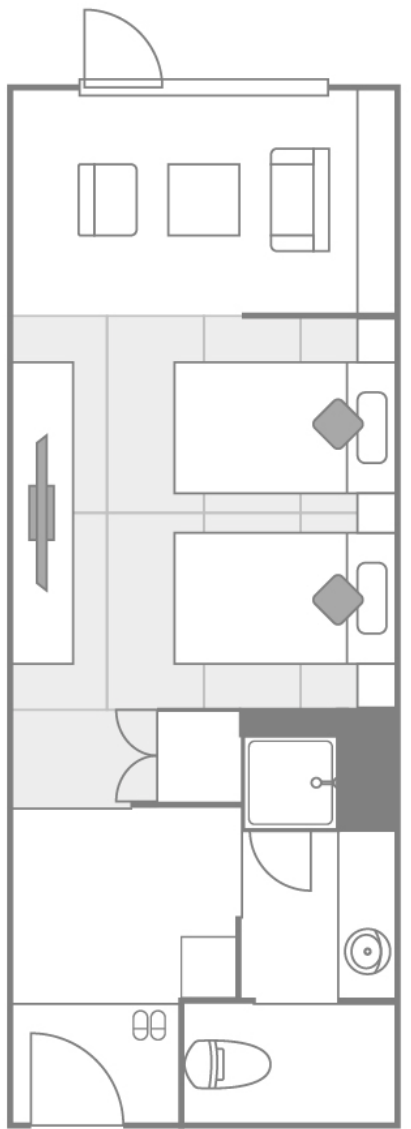
Located on the upper floor, these special Japanese-modern rooms offer spaciousness and comfortable beds, providing you with a pleasant stay. While retaining the calming atmosphere of a Japanese style room, we have assembled items that will make your stay more comfortable. It is a space where you can relax and enjoy the spectacular views of the four seasons.

 Check-in: 3pm

 Check-out: 11am

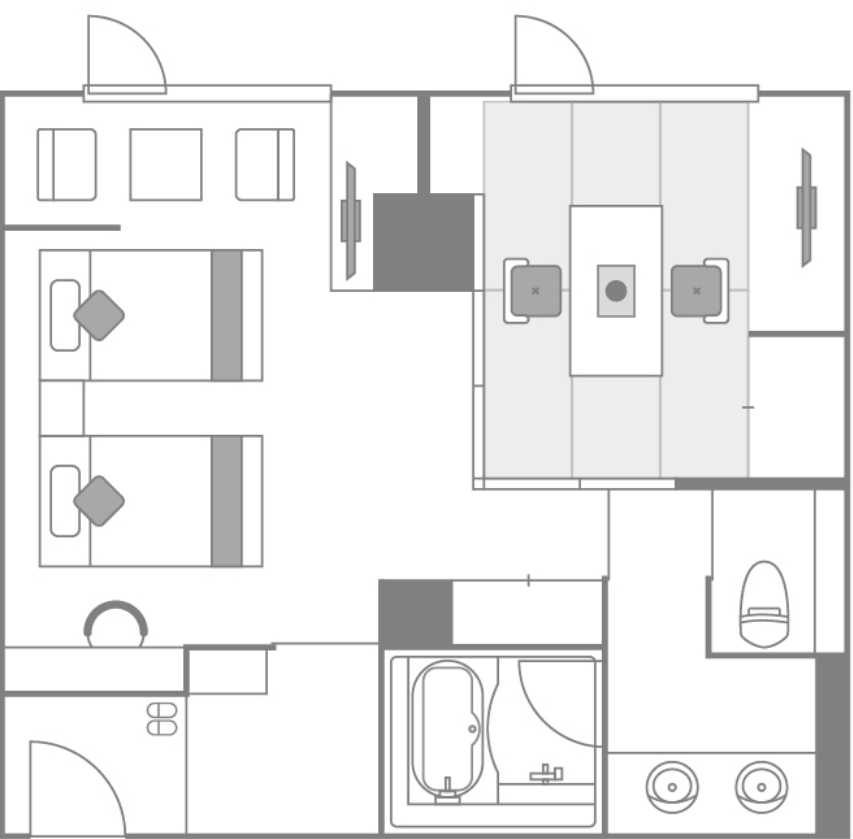
 Non-smoking

 Free WiFi



Japanese-modern twin

Size: 30-35 m² / Capacity: 2 guests



Japanese-Western hybrid room

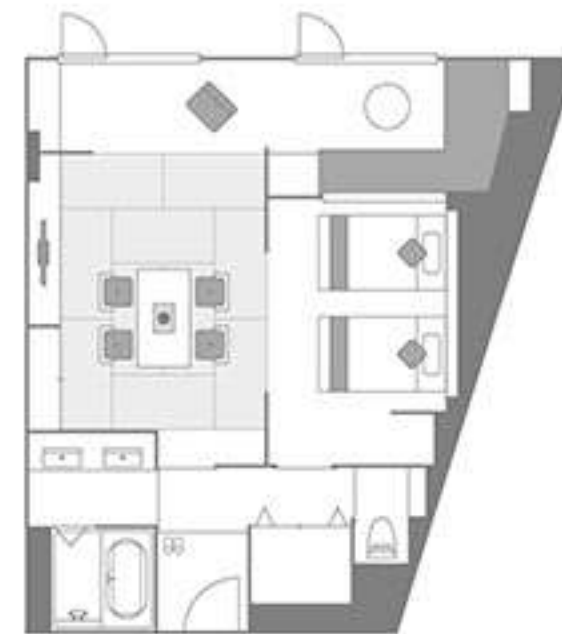
Size: 50 m² / Capacity: 4 guests

Facilities : CD player / Healing music CD / Coffee maker / Thermal water jar (for hot / cold) / Air cleaner / Refrigerator / Mineral water (1 bottle / person)

Amenities : Yukata / Pajamas / Slippers / Tabi socks / Hairbrushes / Toothbrush sets / Cotton swabs / Towels

Men's set : Face lotion / Shaving gel / Razor / Cotton swabs / Hairbrushes / Face wash / Face care lotion / Scalp lotion / Hair liquid

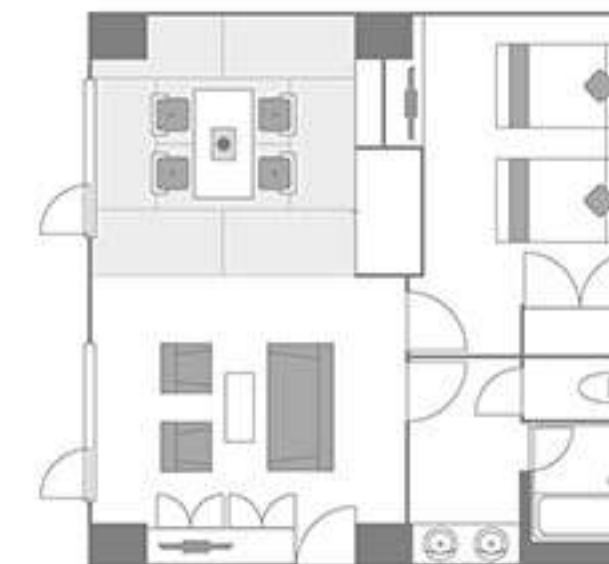
Women's set : Foaming net / Shower cap / Beauty set / Hairbrushes / Face wash / Toner / Milky lotion / Makeup remover



Japanese-Western hybrid room with canyon view

As the name suggests, it offers a direct view of the Sounkyo gorge. The room features a 10 tatami mat-sized Japanese style room, a Western style room with 2 beds, and an indoor porch facing the canyon with a spacious sofa.

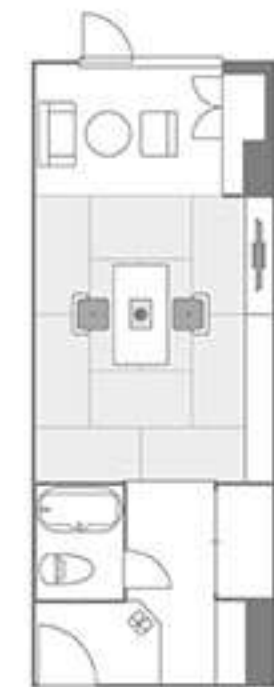
Size: 56.3 m² / Capacity: 6 guests



Japanese-Western special room

This special room features a spacious combination of Japanese and Western style living rooms with luxurious furnishings. The Western style area is equipped with sofas and beds.

Size: 50 m² / Capacity: 5 guests



Japanese style room

It is a standard Japanese style room, and is the most common type of room at Hotel Taisetsu. Relax and unwind in this Japanese traditional atmosphere - it will surely soothe the fatigueness from your journey.

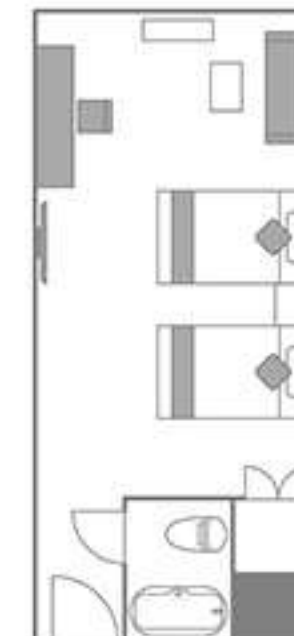
Size: 32.5 m² / Capacity: 4-5 guests



Japanese style twin

It is a tatami mat room equipped with two beds. Also, it features a shower booth instead of bath tub. It is recommended for guests who prefer sleeping on beds while experiencing a Japanese atmosphere.

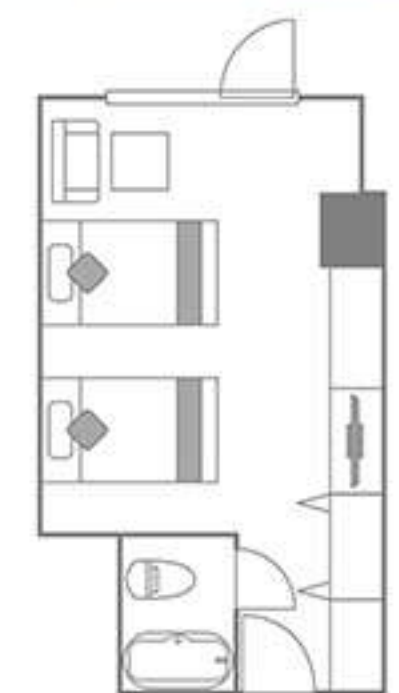
Size: 23.2m² / Capacity: 2 guests



Deluxe twin

This newly renovated deluxe room is slightly larger than the standard twin. It is recommended for guests preferring a Western style room.

Size: 28.3m² / Capacity: 2 guests



Standard twin

It is a standard Western style room at Hotel Taisetsu. There is a sofa so you can relax thoroughly.

Size: 23m² / Capacity: 2 guests

Space of total comfort for all travelers

We offer a variety of facilities to ensure all our guests have a pleasant stay. For example, you can spend time outside of your room in the lounge where you can relax while reading books, or in the bright light-filled cafe.



Relaxing lobby lounge

1F, East wing

How about the precious experience of searching for your favorite book while gazing at the fireplace?
Relax in the spacious area and enjoy the afterglow of your trip.



Taisetsu Bakery Cafe & Bar

1F, East wing 8am-6pm

Located on the first floor of the hotel, its open space with wooden frame interior allows you to feel the warmth of nature. The sunlight pours in abundantly during the day. And at night, you are enveloped in a warm light that makes you feel as if you are wrapped in a warm blanket. All of the breads are baked in-house every day with a special recipe.

Taisetsu Bakery Cafe & Bar invites you to spend your time differently than in the city.



Canyon Mall

Souvenir shop

The shop carries a wide variety of items, including local Kamikawa region specialties and souvenirs, items handmade by artists and products from the hotel brand, Taisetsu Shoten. You can also purchase drinks and daily necessities.

1F, East wing / 8am-11am & 4pm-9pm (Hours can change seasonally)



Peace Library

Relaxation room

Share unforgettable moments with your family by gathering around a book, read aloud and laugh together. We have a selection of picture books and encyclopedias specially selected by book-selecting professionals. Please come and enjoy a unique travel experience.

1F, East wing / 8am-10pm



VIO Reflexology

Relax your mind and body with a full-fledged massage. It offer a variety of menus. Please stop by on your way back from the hot springs.

7F, West wing



Banquet halls

A variety of rooms are available in different sizes and for different purposes to accommodate both large and / or small groups. Please contact the hotel for more information.

B1, East wing



Taisetsu Chaya Izakaya

Come by and have a late-night snack if you are feeling a little hungry, or have a lunch if you are staying multiple nights. It is open until late at night.

B1, East wing



Urban

A dedicated space that can be reserved for private use. Advance reservations are required. Please contact the hotel for more information.

B1, East wing

Other facilities

- Coin laundry
- Meeting room
- Smoking space
- Vending machine
- Massage
- Parking area (free of charge)
 - Cars - max 100 cars
 - Motorcycles - max 5 large / 10 mid-sized (first come, first served) *Roofed space available

Kamui Mintara - Playground of the Gods -

A 360-degree panoramic view.
Gorge covered by snow all year around.
Waterfalls cascading down from cliffs.
The gradation of autumn leaves.
Beautiful columnar joints of Hokkaido canyon.

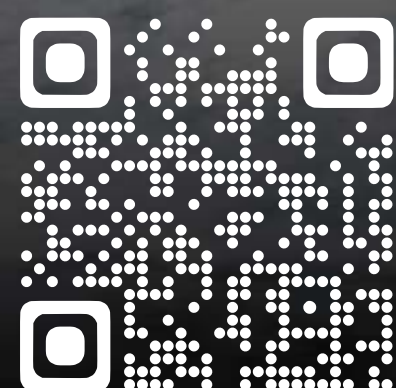
All of which you can experience once you step outside our hotel are the components to Kamui Mintara; playground of the gods; area so nicknamed by the Ainu people.



Ishikari River Rafting Tour

Alpine River Guides

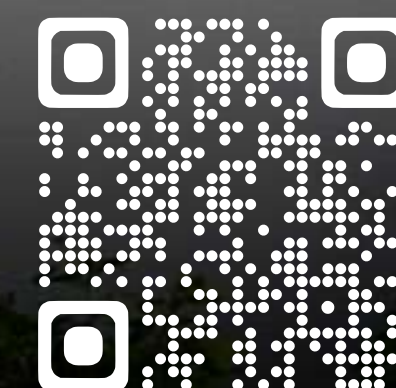
Alpine River Guides is based in Kamikawa-cho, Kamikawa-gun, Hokkaido, and offers paddle sports tours such as white-water rafting. Don't miss the experience that can only be found here.

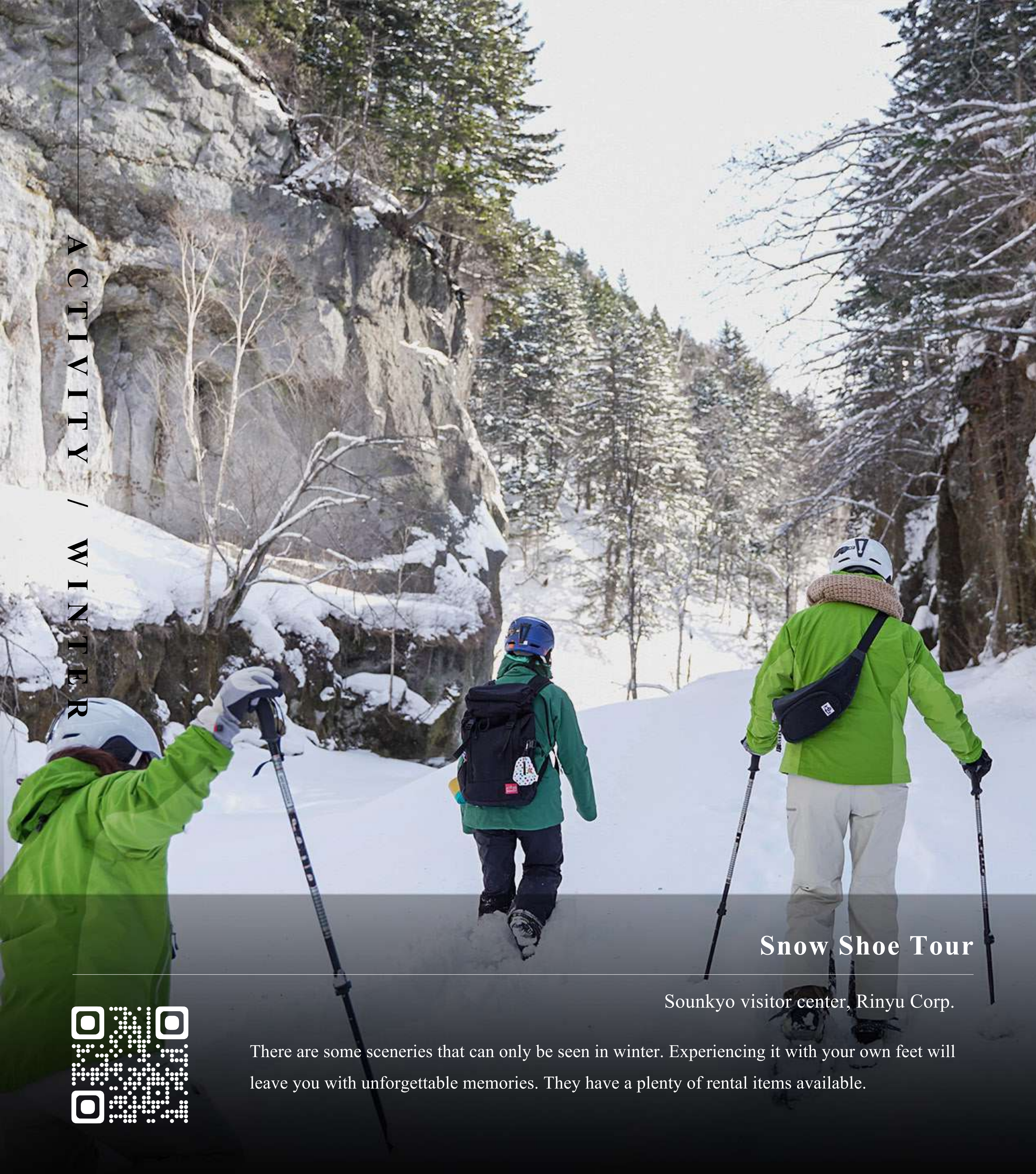


Mt. Kurodake Ropeway

Sounkyo office, Rinyu Corp.

Taking the ropeway at 6am, the time it starts its daily operation, may allow you to encounter a spectacular view that can only be seen in the early morning. It takes on a different look depending on the season. And if you are lucky enough, you will be able to see a sea of clouds below you.





Snow Shoe Tour

Sounkyo visitor center, Rinyu Corp.

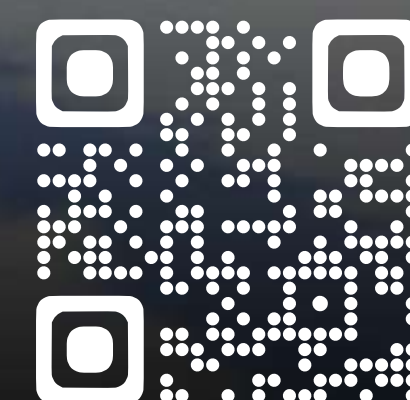
There are some sceneries that can only be seen in winter. Experiencing it with your own feet will leave you with unforgettable memories. They have a plenty of rental items available.



Snow Rafting

Daisetsuzan Adventures

The dynamic terrain of Sounkyo allows you to enjoy activities such as riding snowmobiles and snow groomers. Surely you can enjoy outdoor activities even in winter.





Mountain Climbing / Trekking

There are many trekking spots around Souunkyo, offering a variety of courses that can be enjoyed by everyone from beginners to intermediate and advanced trekkers. Why not start with a safe guided tour?

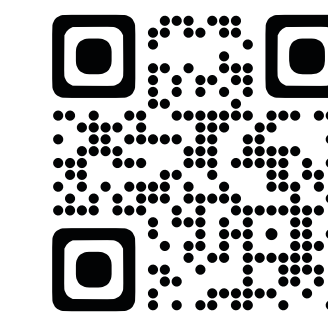
Period: All year
(Course and difficulty level can differ depending on the season)



Miraculous Illumination

It is a free illumination event where you can enjoy a new way of strolling among autumn leaves. A projection mapping display shall leave you with one-of-a-kind memories of the beautiful scenery during this season.

Period: Mid-September - mid-October every year



Taisetsuzan Tours

There is a variety of tours, including those around Ginga-Ryusei Waterfalls, which is nearby from our hotel.

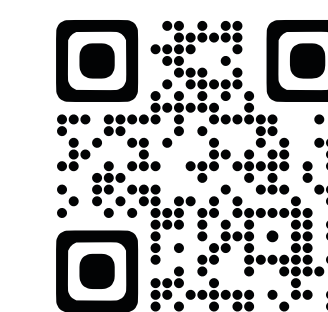
Period: All year
(Course and difficulty level can differ depending on the season)



Souunkyo Ice Fall Festival

One of the most popular winter events in Hokkaido. Around 30 ice sculptures of various sizes get displayed in the 10,000m² venue along the riverbed of Ishikari River. Shuttle buses are available from the hotel.

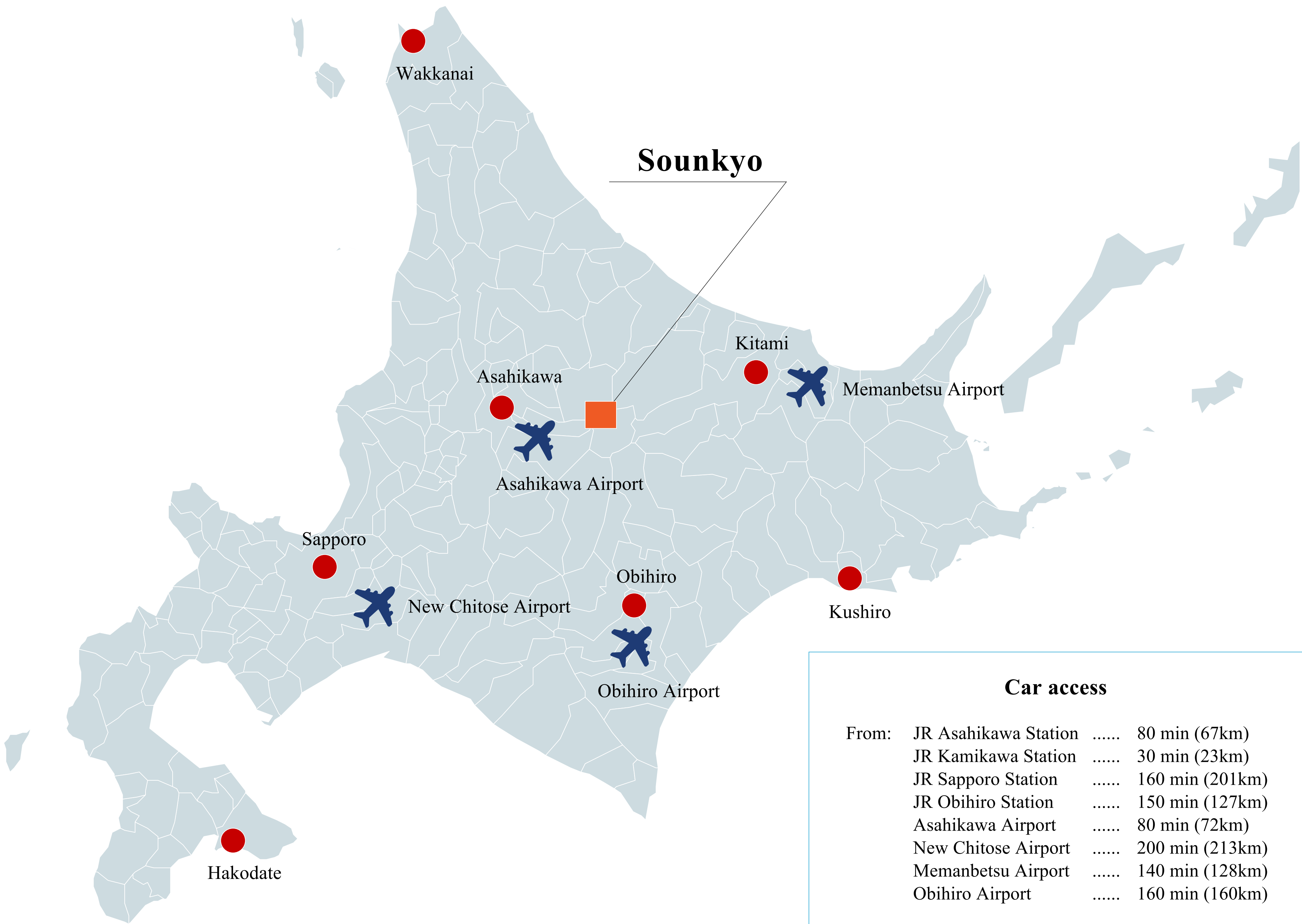
Period: Late-January - early-March every year



Full of attractions for every season - enjoy and get the most out of the Gods' playground!

A C C E S S

Take a journey to our hilltop hotel. The breathtaking views along the way will surely heighten your expectations for the stay.



Car access

From:	JR Asahikawa Station	80 min (67km)
	JR Kamikawa Station	30 min (23km)
	JR Sapporo Station	160 min (201km)
	JR Obihiro Station	150 min (127km)
	Asahikawa Airport	80 min (72km)
	New Chitose Airport	200 min (213km)
	Memambetsu Airport	140 min (128km)
	Obihiro Airport	160 min (160km)

Time and distance are calculated based on standard values. During the winter period (late-October to late-April), equipment such as snow tires is required. Please note that travel times may vary greatly due to snow, etc.

Limited express bus, the Taisetsu



A seasonal shuttle bus, the Taisetsu, operates daily from bus stop number 1 in front of JR Asahikawa station. Reservations are required by 5pm three days prior to your stay. Please contact the hotel for details on the schedule, departure times, stops, etc.

Pick-up / drop-off for large group travelers




We provide transportation for groups of 20 or more guests.
* Reservations are required.
* Limited to within 200km per round trip. For longer distances, please contact the hotel.




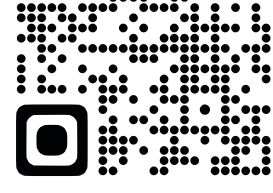
Address: Sounkyo, Kamikawa-cho, Kamikawa-gun, Hokkaido 078-1701, Japan Phone: +81-1658-5-3211 Fax: +81-1658-5-3420

Reservation / Inquiry

 **+81-1658-5-3211**

Business hours 9:30am-5:30pm
(including weekends/holidays)

 <https://www.hotel-taisetsu.com/>



Guest rooms (188 rooms total)

- Wabo Yukihana 10 rooms
- Yuki Hotaru 16 rooms
- Japanese style room (with bath and toilet) 141 rooms
- Japanese-Western hybrid room (with bath and toilet) 6 rooms
- Japanese style twin (with shower booth and toilet) 12 rooms
- Standard twin (with bath and toilet) 3 rooms

Banquet halls

- Sho-Chiku-Bai (310㎡ ca. / max 160 people / with stage)
 - Sho (131㎡ ca. / max 66 people)
 - Chiku (88㎡ ca. / max 40 people)
 - Bai (98㎡ ca. / max 30 people)
- Ginga-Ryusei (153㎡ ca. / max 60 people)
 - Ginga (66㎡ ca. / max 20 people)
 - Ryusei (88㎡ ca. / max 40 people)

Other facilities

Lounge / night club / izakaya / meeting room / smoking booth / souvenir shop / vending machine / massage / coin laundry

Parking (free of charge)

- Cars max 100 cars
- Buses max 3 large-sized buses
- Motorcycles max 5 large / 10 mid-sized motorcycles (first come, first served) *Roofed space available





ホテル大雪

ONSEN & CANYON RESORT

INFORMATION



ホテル大雪

ONSEN & CANYON RESORT

1 Hinna no Mori



2F, West wing

Signature buffet-style restaurant at Hotel Taisetsu, using a plenty of Hokkaido ingredients. Enjoy as much of your favorite food as you like to your heart's content.

2 Kids' corner / Nursing room



2F, West wing

We have prepared a kids corner and nursing room with toys and picture books adjacent to Hinna no Mori. You are free to use it anytime.

3 Chinita no Yu



1F, East wing

It's an European style indoor bath. The brick style and stained glass interior give it an exotic feel. The water is at its highest temperature in our hotel.

4 Lobby lounge / bookshelf



1F, East wing

We designed the lounge as a space where you can relax and enjoy a free drink. Please make yourself at home with a book in hand.

5 Front lobby



1F, East wing

Located on the 1st floor of the east building, our spacious front lobby provides guests with a relaxing feeling from the moment they arrive.

6 Peace Library



1F, East wing

We have a selection of picture books and encyclopedias specially selected by book-selecting professionals. Please come and enjoy a unique travel experience.

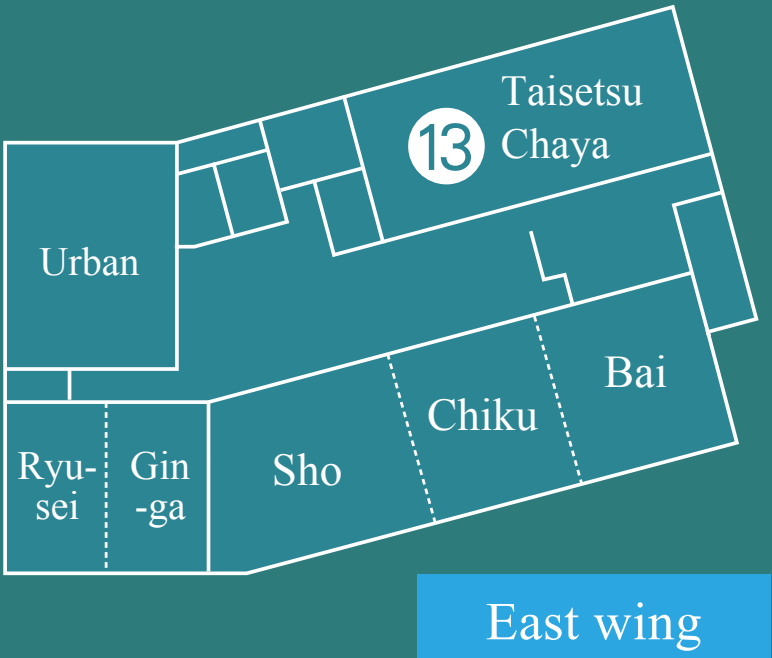


9 Taisetsu Bakery Cafe & Bar 1F, East wing

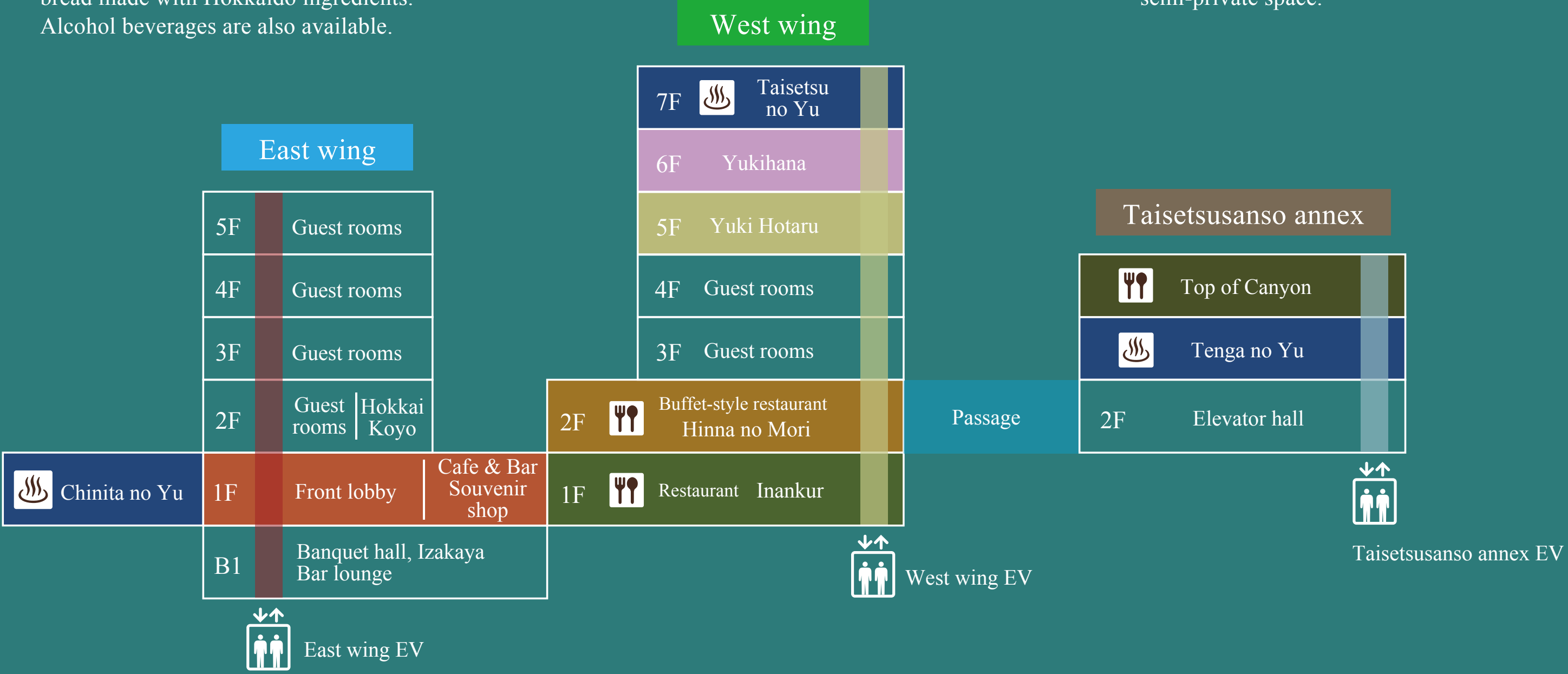


A bakery cafe that anyone can use. Please enjoy the coffee and lattes made with care by our baristas, as well as the bread made with Hokkaido ingredients. Alcohol beverages are also available.

B1



The restaurant is inspired by the environment of Souunkyo. Relax and enjoy our signature creative cuisine in a semi-private space.



7 Canyon Mall



1F, East wing

There is a wide selection of local Kamikawa region specialties and souvenirs. You can also purchase drinks and daily necessities.

8 Coin laundry



1F, East wing

A 24-hour coin laundry on-site. Washing machines and dryers are available for use at any time.

- 200 yen per wash
- 100 yen per dry
- 100 yen per detergent

10 Tenga no Yu



3F, Taisetsusanso annex

The beauty of the valley shrouded in morning mist and the refreshing feeling of as if being one with the majestic nature of Souunkyo are must-experience. It will heal both your mind and body.

11 Taisetsu no Yu



7F, West wing

It allows you to enjoy the hot spring in the highest point in the area. Once you step outside to the open-air bath, you are assured to enjoy the grandeur of the Mt. Taisetsu along with a signature view of the season.

12 Kikyou An



2F, West wing

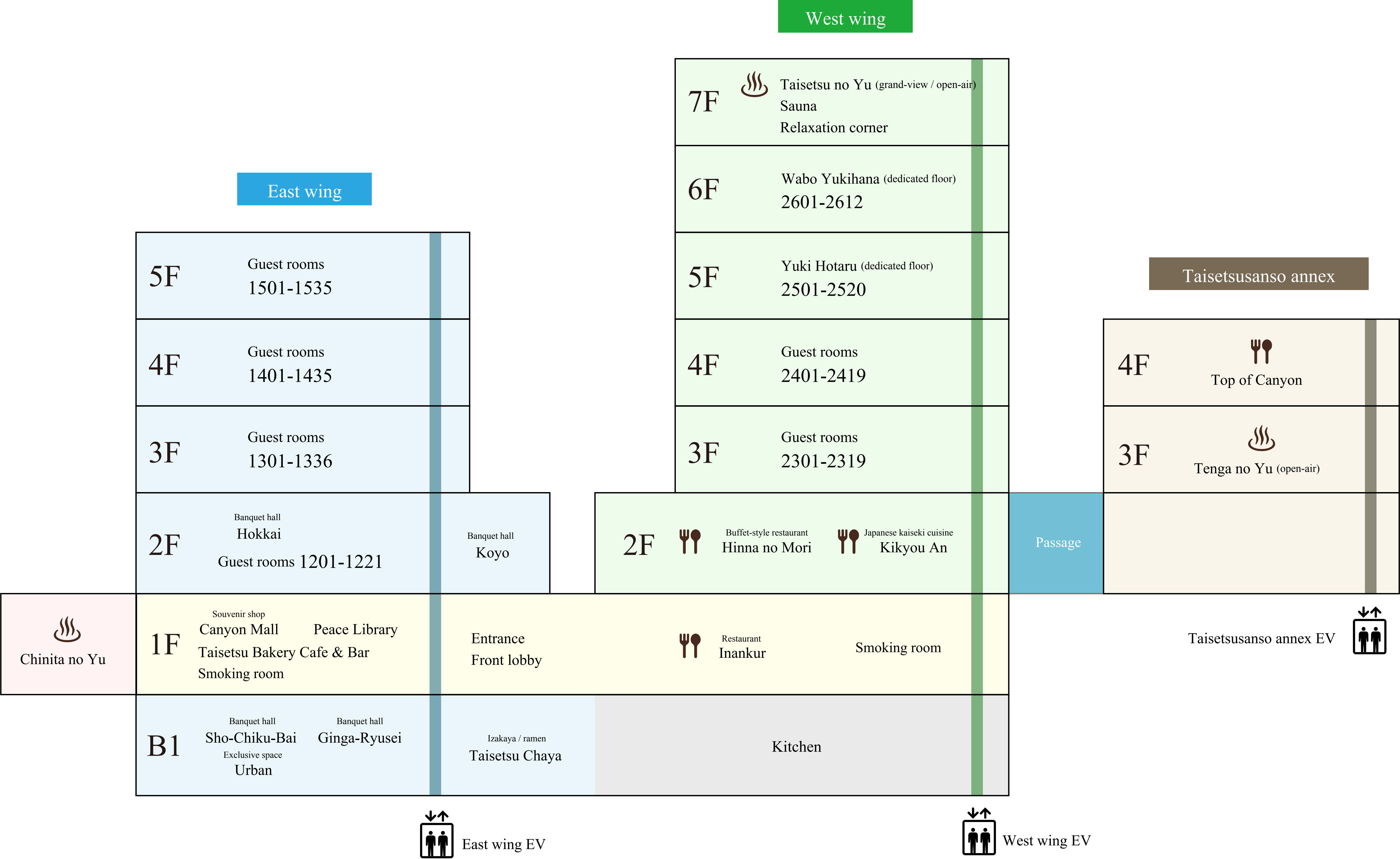
This kaiseki restaurant is exclusively available to guests staying in the premium room Yukihana. The essence of Kikyou An lies in the taste of the colorful seasonal ingredients. It comprises of all private rooms.

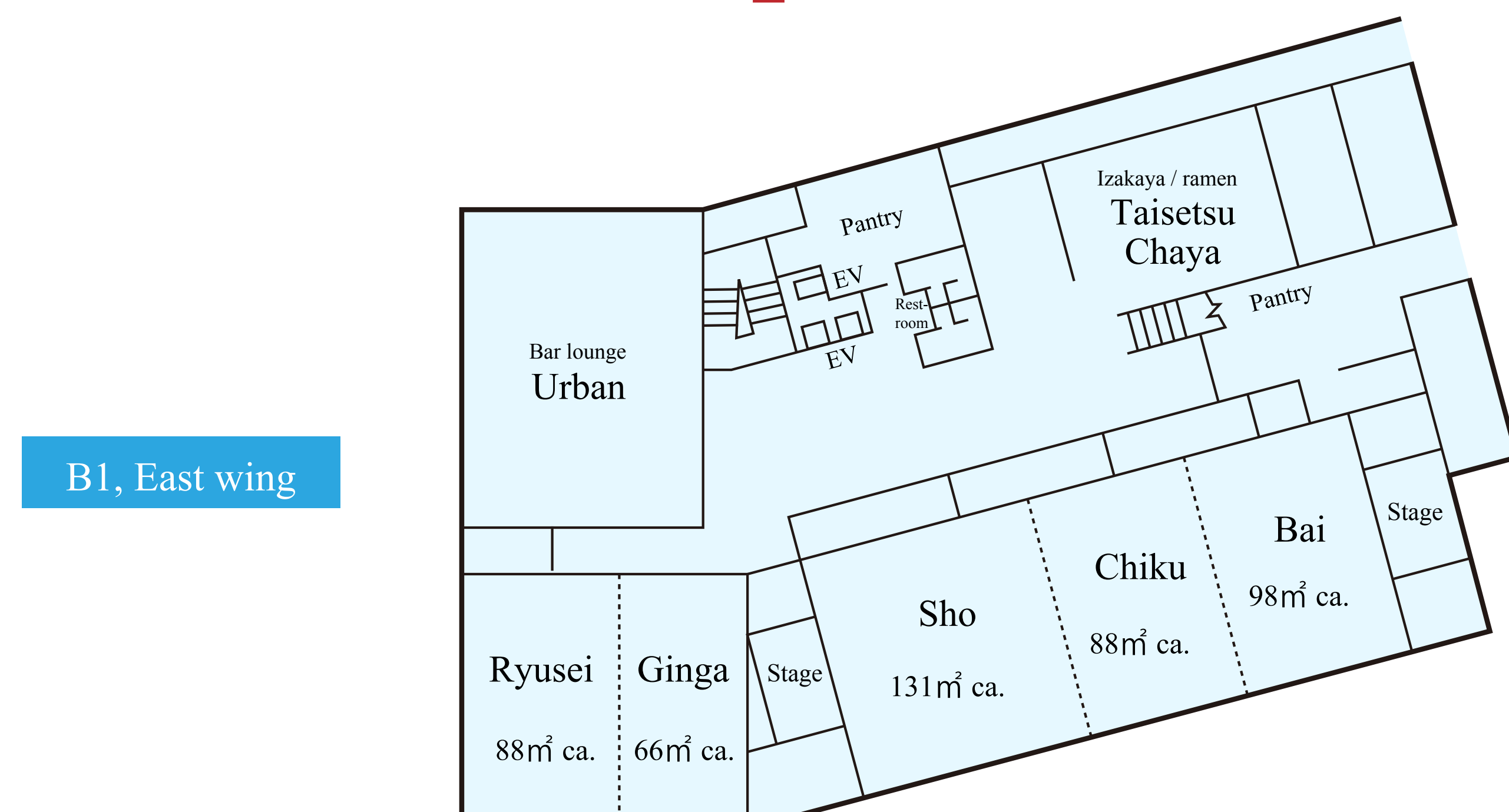
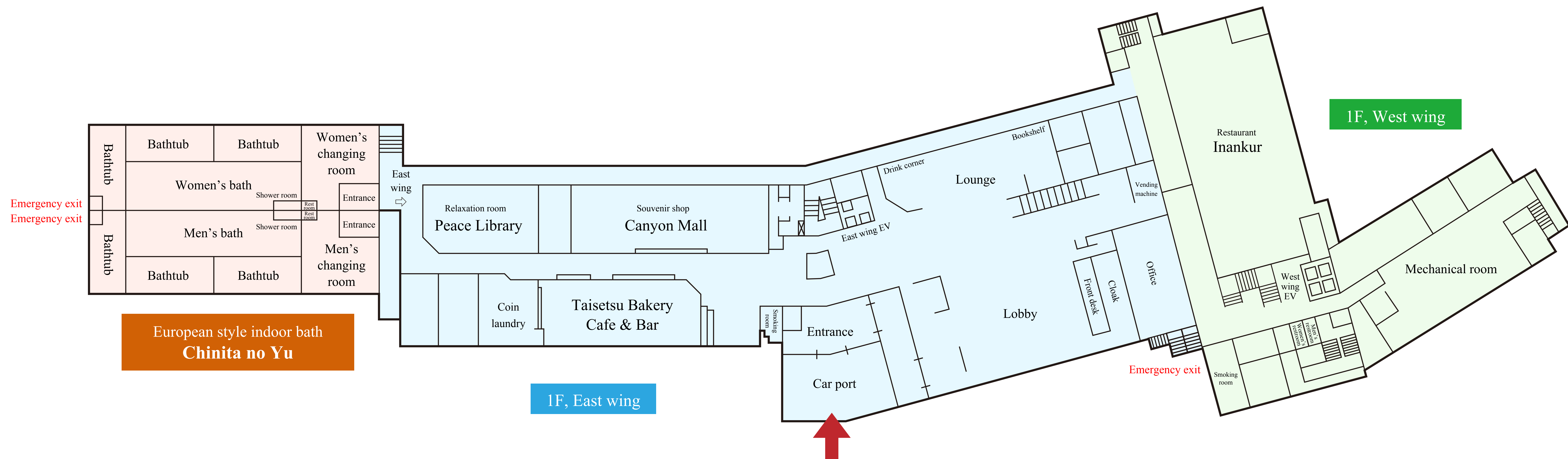
13 Taisetsu Chaya

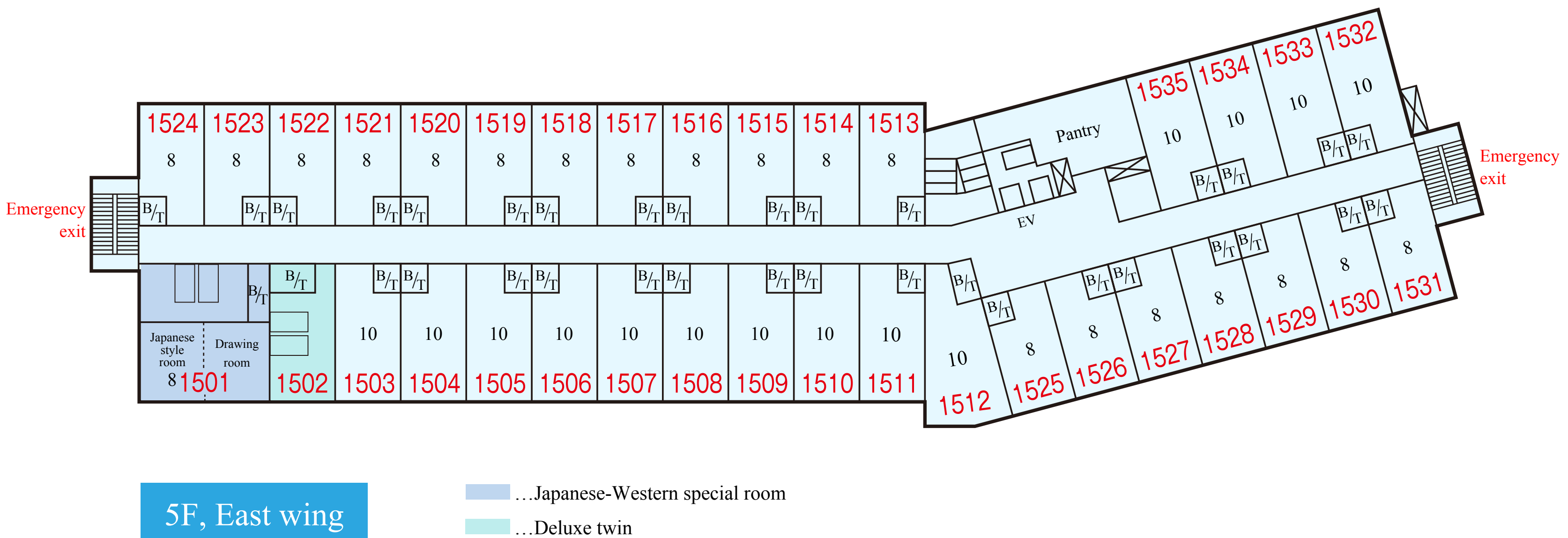
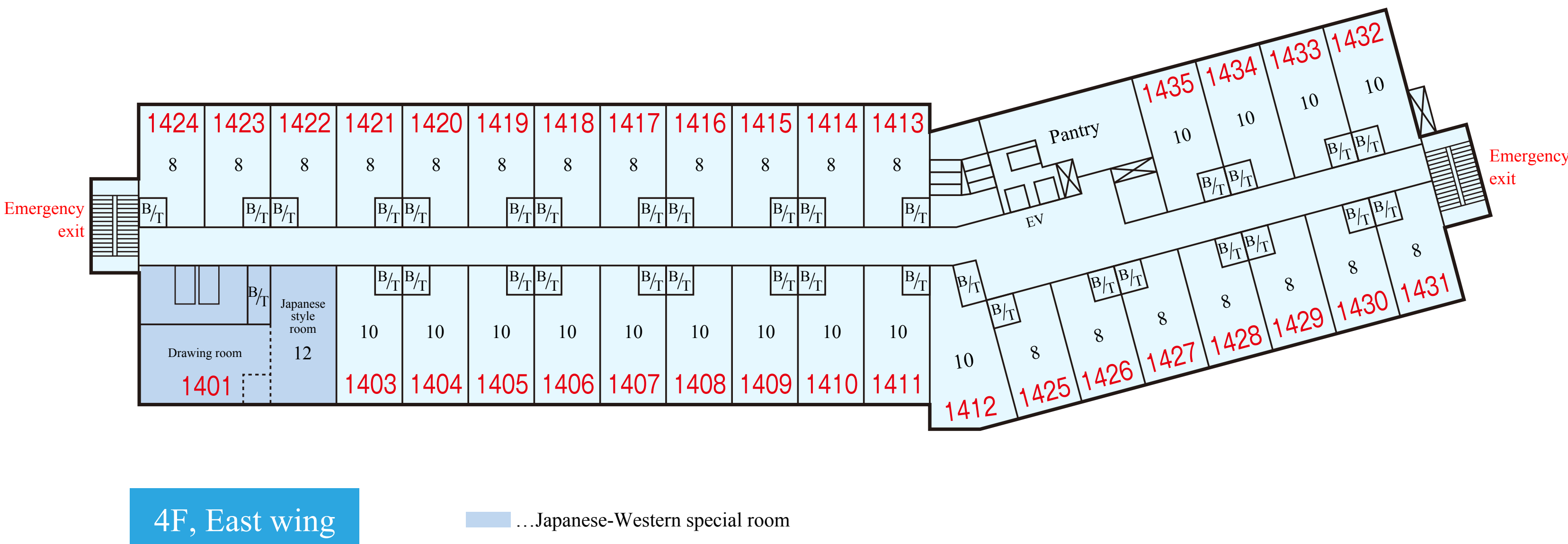
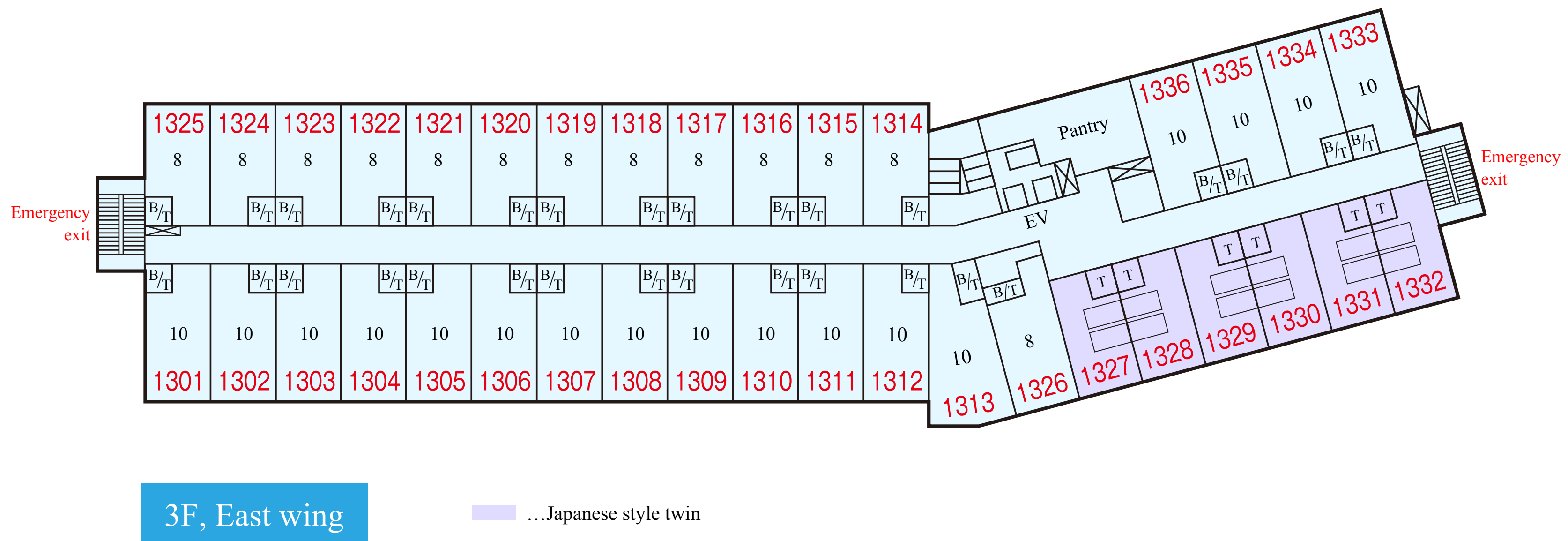
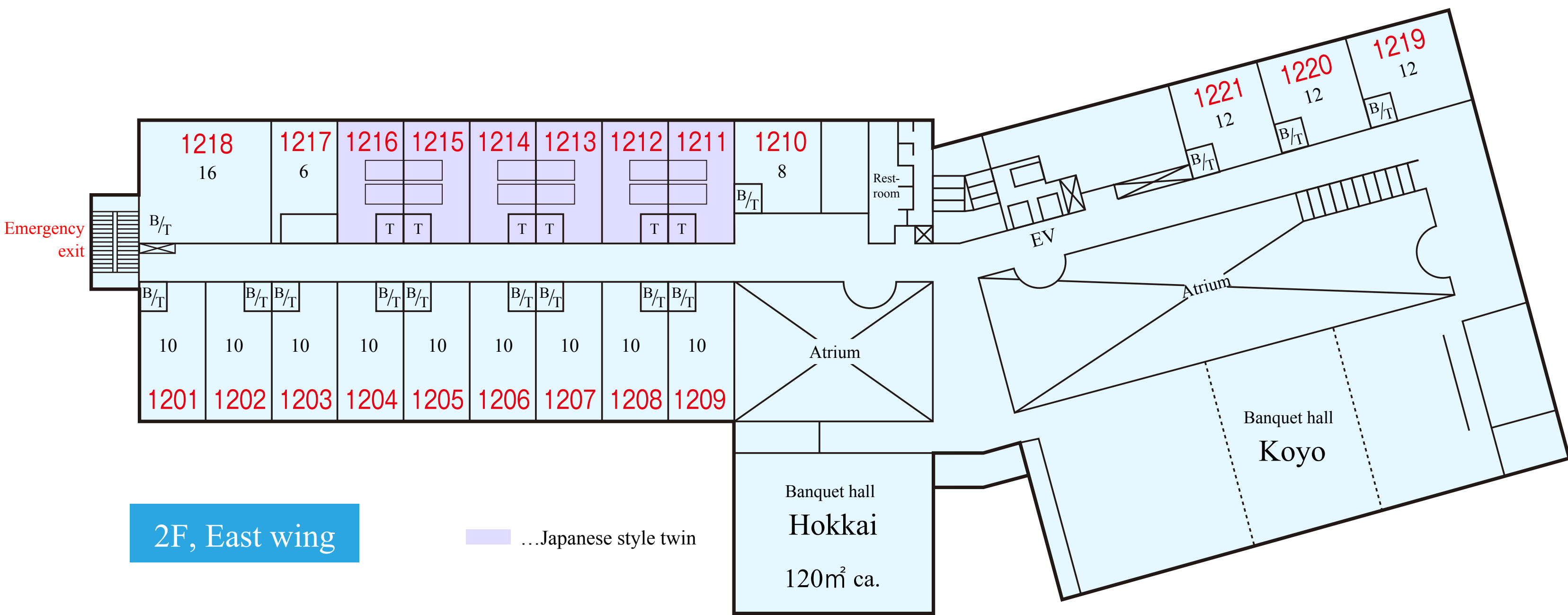


B1, East wing

It's open until late at night, so you can come and have a late-night snack if you are feeling a little hungry. We also serve lunch during the day.

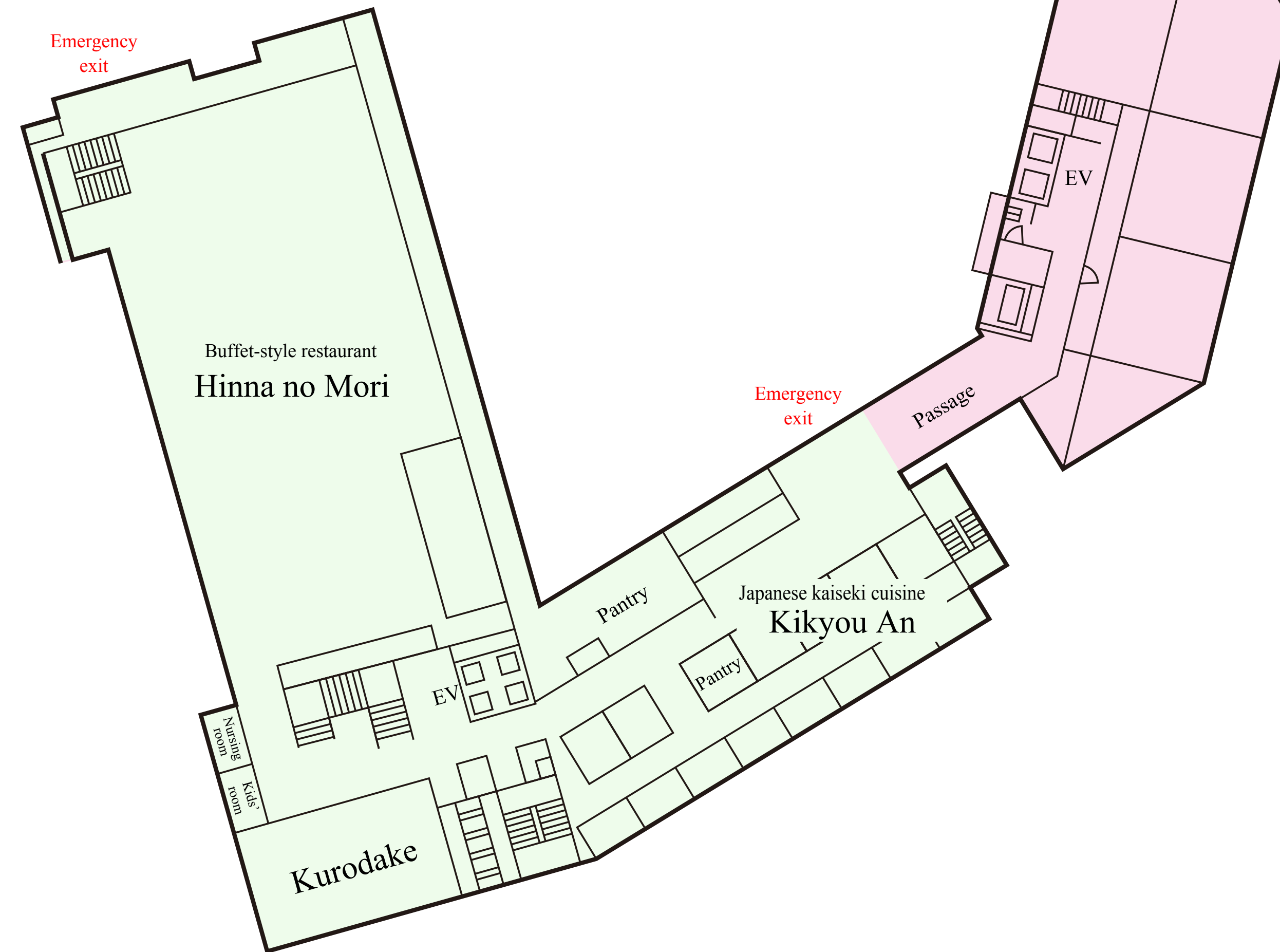




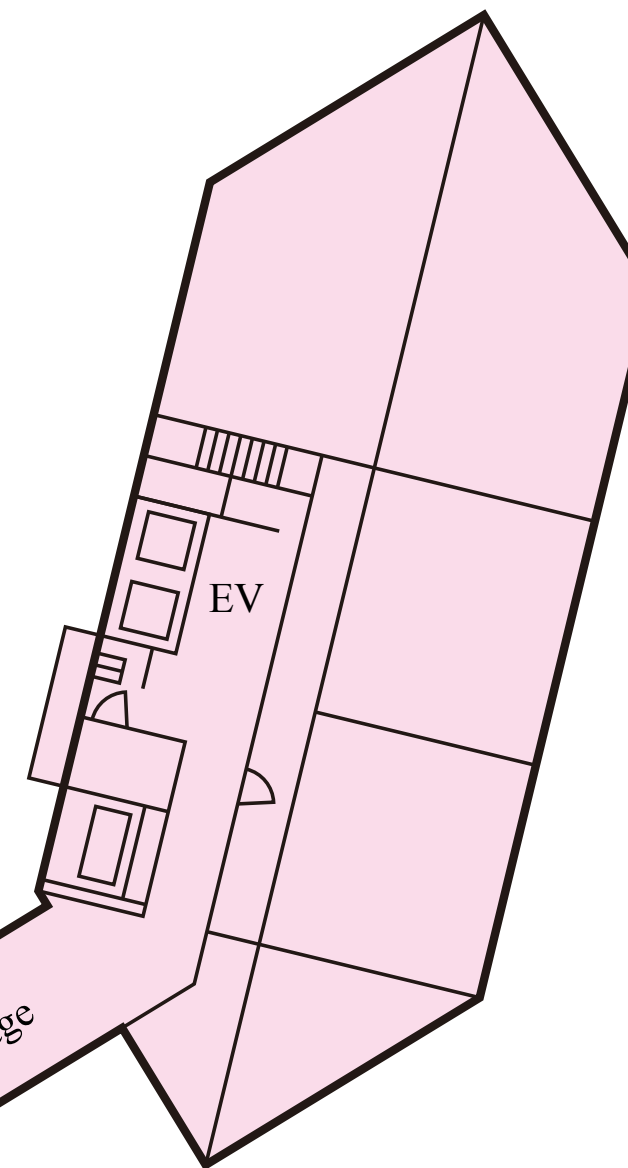


*Figures written in black in each guest room indicate the number of tatami mats laid in the room. 1 tatami mat is approx. 2m² in size.

2F, West wing



2F, Taisetsusanso annex

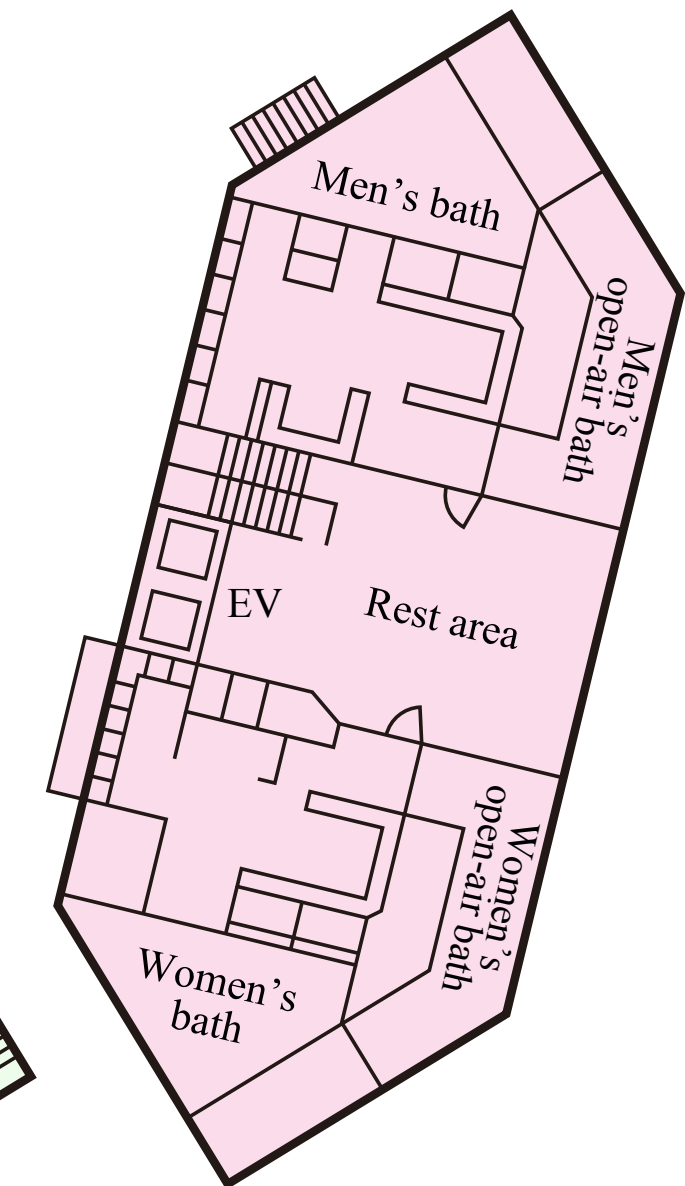


3F, West wing



- ...Japanese-Western special room
- ...Japanese-Western hybrid room with canyon view
- ...Standard twin

3F, Taisetsusanso annex

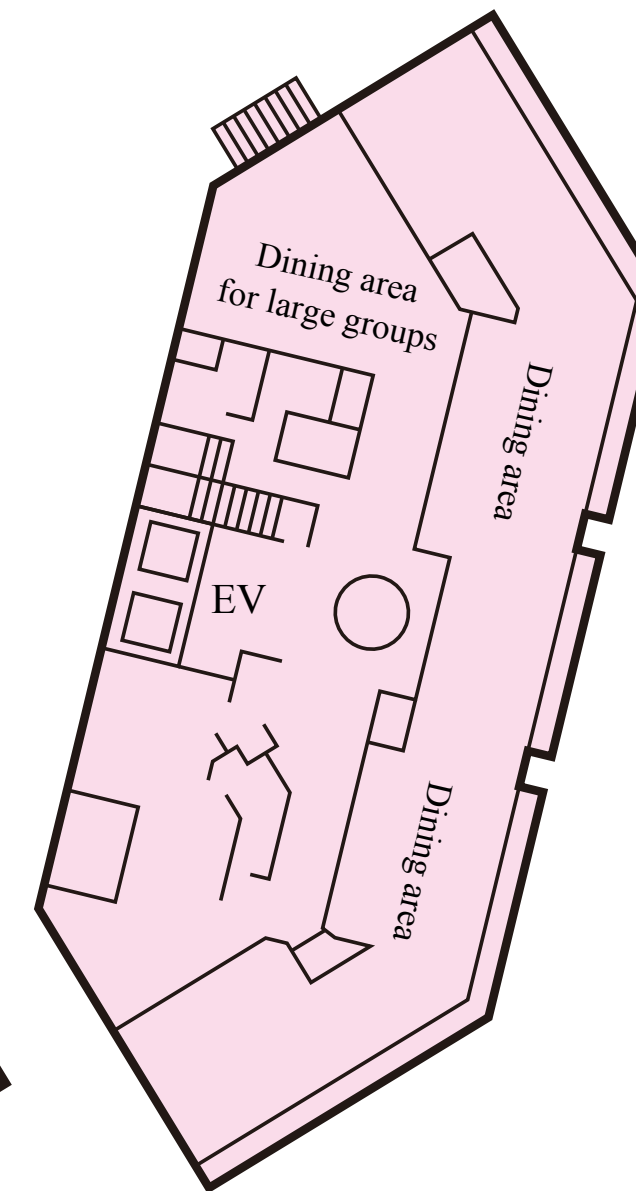


Open-air bath with valley view
Tenga no Yu

*Figures written in black in each guest room indicate the number of tatami mats laid in the room. 1 tatami mat is approx. 2㎡ in size.

4F, Taisetsusanso annex

4F, West wing

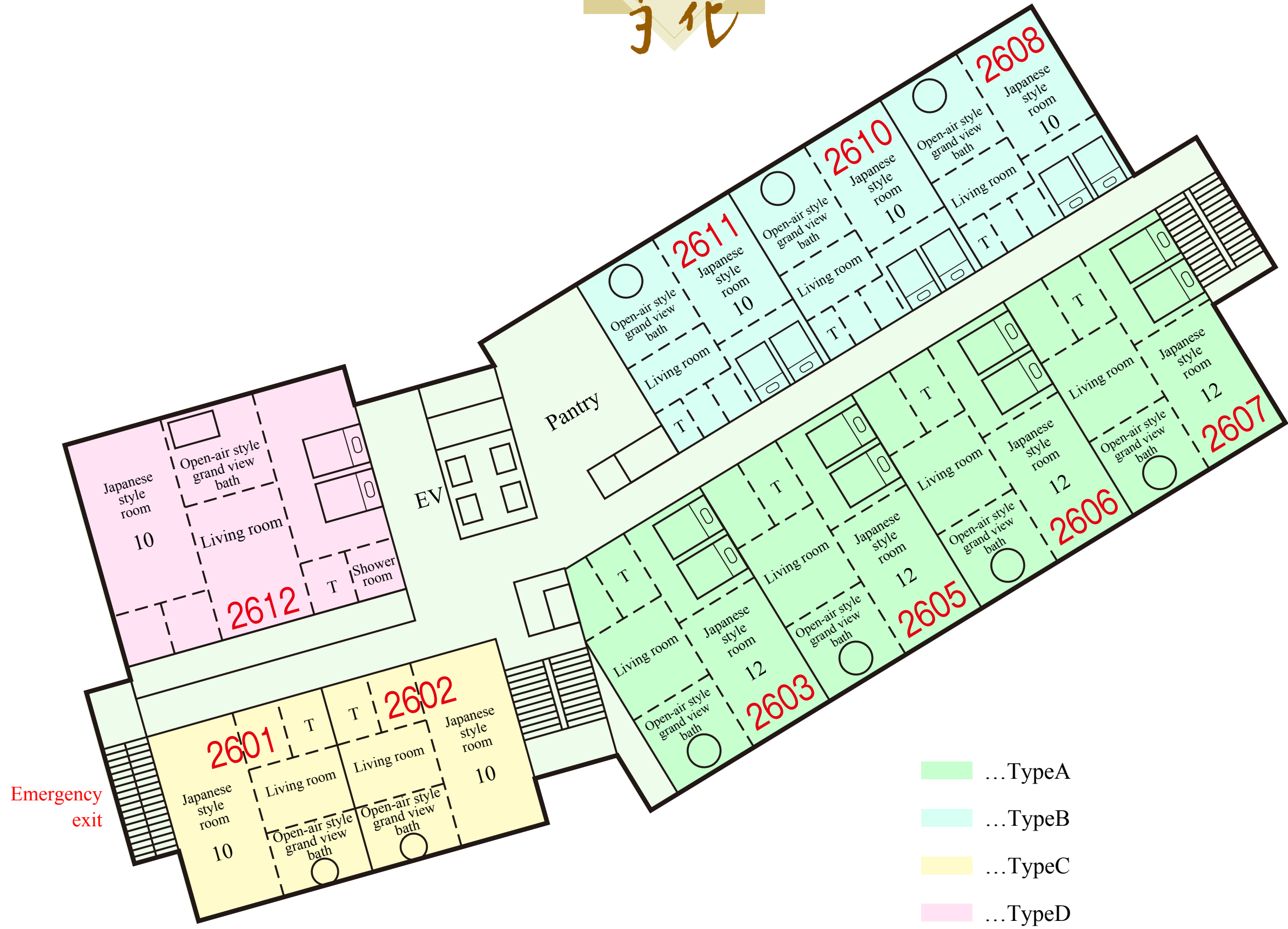


5F, West wing



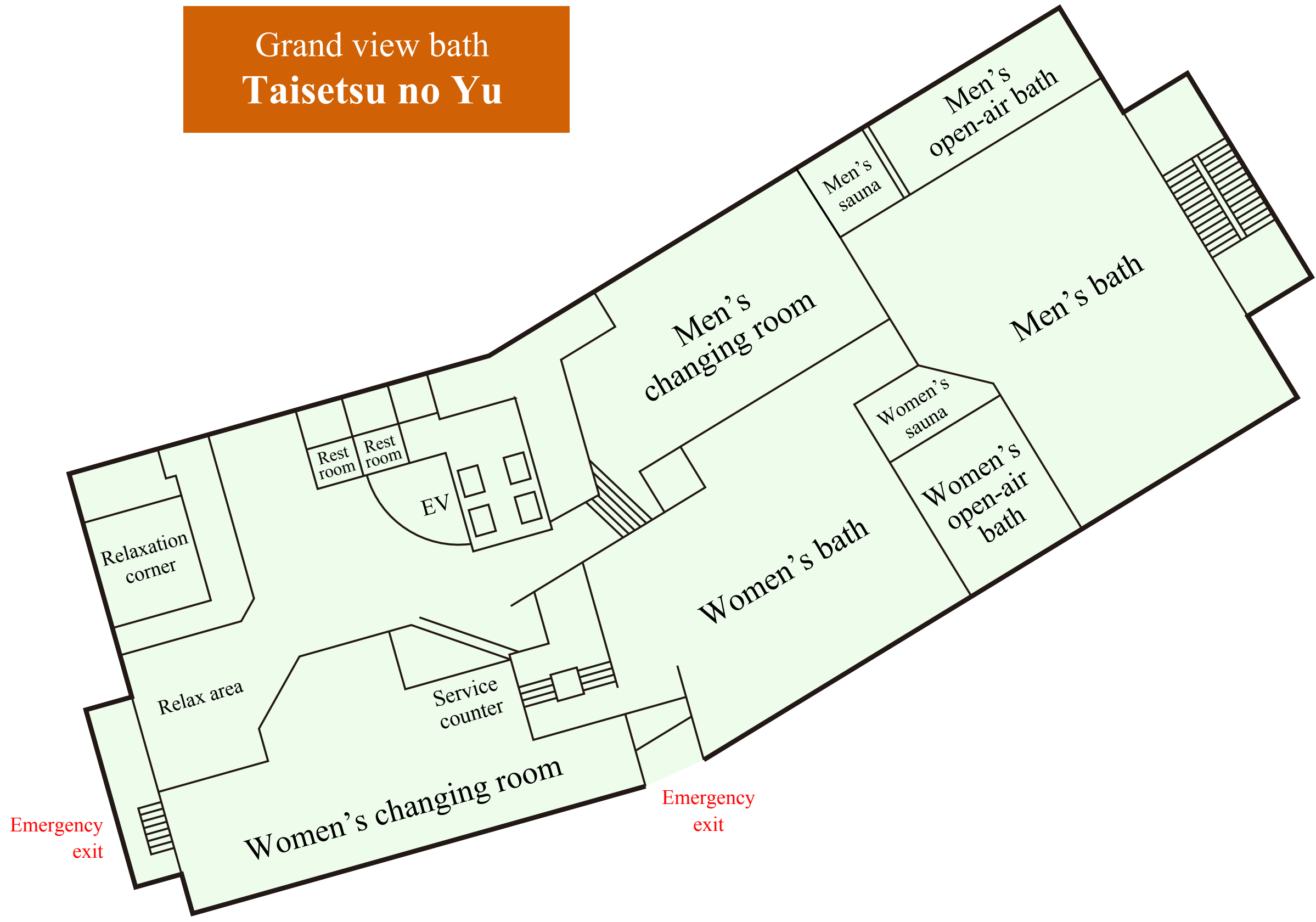
*Figures written in black in each guest room indicate the number of tatami mats laid in the room. 1 tatami mat is approx. 2m² in size.

6F, West wing



7F, West wing

Grand view bath
Taisetsu no Yu



*Figures written in black in each guest room indicate the number of tatami mats laid in the room. 1 tatami mat is approx. 2m² in size.